



# Introduction



The information contained in this communication/document may be confidential and legally privileged. It is intended for the sole use of the individual/s or entity to whom this has been addressed or copied. If you are not the intended recipient you are hereby notified that any copying, disclosure, distribution, or hereof and/or the related attachments is strictly prohibited and will be unlawful without the written permission of POWA.

# Who are we?



A non-governmental feminist organisation that ...

- Advocates a safe and equal society provides...
- Psycho-social support and shelter for women and children and...
- Legal and Training support underpinned by our...

## Bathopele Ethos and Values...

Respect • Passion • Transparency • Confidentiality • Empowerment

## POWA in a nutshell

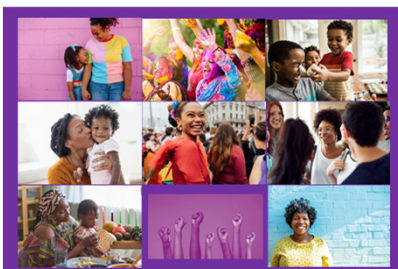


- Provides survivors of gender-based violence with essential support that empowers them to rebuild their lives and reclaim their dignity.
- Collaboratively navigates the ever-evolving landscape of social justice in support of inclusivity and diversity.
- Engages in activism, advocacy, and counselling.

## Timeline Highlights...



# Impact 2023-2024 examples



Counselling POWA Locations	Facility Type	Impact...						
		Counselling Sessions	Email	Follow-up Sessions	Healing Day Sessions	Social Media	Support Groups	Telephone & WhatsApp
Berea	Head Office	149	207	94		264	14	389
Katlehong	Office	108		45				40
Sedibeng - Evaton	Office							
Soweto	Office	286			1		12	252
Tembisa	Office	123		72	48			60
Vosloorus	Office	134		54	48			65
East Rand Shelter	Shelter	29		15				5
West Rand Shelter	Shelter	15		49			9	
Masakhane	Thuthuzela Care Centre	1449		76				
Nthabiseng	Thuthuzela Care Centre	481		115			10	
<b>POWA Second-stage House</b>	Transitional Accommodation							
Kempton Park	Victim Friendly Room	141		10				
Olifantsfontein	Victim Friendly Room	197		55				
Rabasothe	Victim Friendly Room	2900		293				
Sedibeng - Evaton	Victim Friendly Room	1104						
Tembisa South	Victim Friendly Room	310		22				
		<b>7426</b>	<b>207</b>	<b>900</b>	<b>97</b>	<b>264</b>	<b>45</b>	<b>811</b>

# Impact 2023-2024 examples



Legal Support Type	Impact ...		
	Face-to-face Consultation	Files Opened	Telephone Advice
Assault GBH	3	18	15
Attempted murder	3	7	4
Child custody	0	13	26
Divorce	5	44	39
Domestic Violence	73	232	159
Protection from harrassment	0	15	31
Mediation	2	2	0
Maintenance	4	17	13
Registration: Customary Marriages	1	0	0
Sexual Offences	0	25	24
other	1		29
	<b>92</b>	<b>373</b>	<b>340</b>

# More Impact



Referrals to... Organisation	Purpose	Impact... one example Ekurhuleni
<b>Clinics/Hospitals</b>	For medical treatment.	<b>45</b>
<b>Court</b>	To apply for protection orders/Maintenance	<b>222</b>
<b>Other Shelters</b>	For safe accommodation	<b>3</b>
<b>SA Police Services</b>	to open cases of assault	<b>393</b>
<b>Childline</b>	Counselling for children	<b>84</b>
<b>Child Welfare</b>	Counselling for children	<b>60</b>
<b>Munisipality Social Worker</b>	Family dispute	<b>1</b>
<b>Masakhane TCC</b>	Counselling and Medical attention	<b>1</b>
<b>NICRO</b>	For crime rehabilitation	<b>25</b>
<b>Makhukhanye Drug and alcohol Rehabilitation</b>	Alcohol and drug rehabilitation	<b>2</b>
<b>Other organisations</b>	Further psychosocial support	<b>32</b>
<b>Legal advice</b>	Legal advice and support	<b>2</b>
<b>DSD</b>	Application for relieve food parcels	<b>34</b>
		<b>904</b>

# More Impact



Education and Public Awareness		Impact Reach...		
Type	Purpose	one example... Ekurhuleni		
		Offices	Care Centre	VFRs
<b>Food Parcels/Comfort packs</b>	Part of psychosocial support to survivors	<b>74</b>	<b>108</b>	<b>280</b>
<b>GBVF Dialogue</b>	With SAPS, DOH, Local municipality and other NPOs and Corporates - GBV awareness/means to deal with the scourge	<b>467</b>		<b>351</b>
<b>GBVF Walks</b>	Door-to-door campaigns in partnership with SAPS	<b>81</b>		<b>594</b>
<b>Information Stalls</b>	Exhibition/information stalls	<b>197</b>	<b>28</b>	<b>1471</b>
<b>Pamphlets Distribution</b>				<b>435</b>
<b>Presentations</b>	On POWA services and GBV	<b>2967</b>	<b>778</b>	<b>722</b>
<b>Workshops</b>	Guidelines and services on working with community to eradicate GBV	<b>50</b>		<b>24</b>
		<b>3836</b>	<b>914</b>	<b>3877</b>

# Impact



- **Partnerships have included...**

- **Litigation partner in KwaZulu-Natal**
- **Gender Based Violence prevention with a Tiktok pilot titled 'A father's voice'**
- **#EndDomesticSilence initiative with JOKO**

- **Projects have included...**

- **Don't Look Away**

Experiment in a townhouse in Joburg – neighbours' responses to drumming vs domestic abuse noise

- **Raising Her Voice**

like contributing to shadow report on policy and practice gaps in SA  
[Government's CEDAW - Convention on the Elimination of all forms of Discrimination Against Women]

- **Teenz Alliance**

- **Training on critical analysis of the linkages between HIV-GBV-poverty**





## King IV™ Principles Alignment

- **Leadership**
  - Steers and sets strategic direction
  - Approves policy and planning
  - Oversees and monitors
  - Ensures accountability
- **Governance Outcome Practices**
  - Effective control
  - Ethical culture
  - Good performance
  - Legitimacy
  - Risk Management

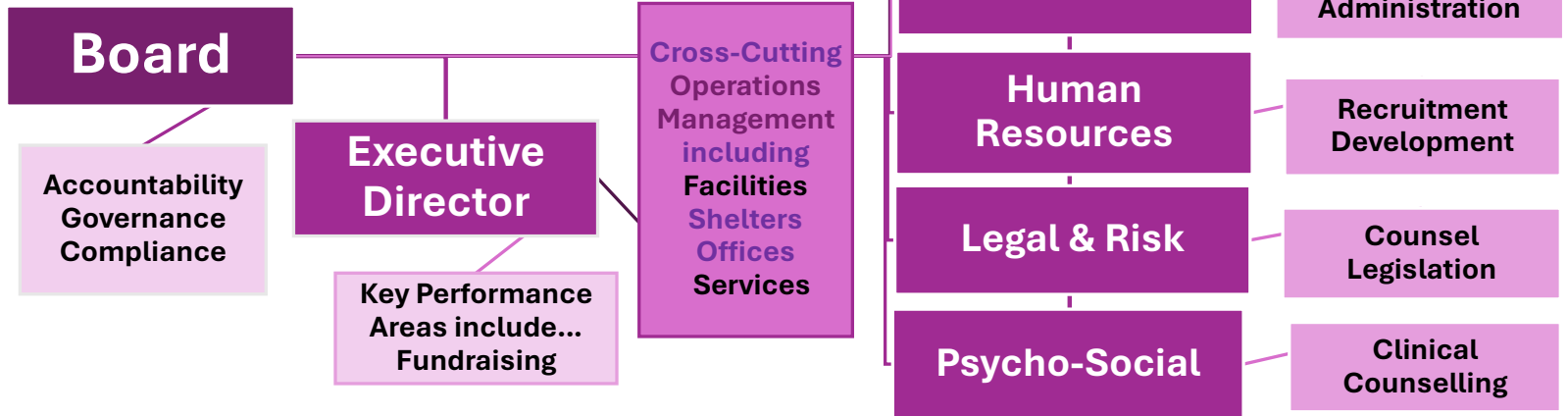
**Activism 2024 April...**  
**Gauteng Care Crisis  
Committee**  
*[DSD Funding issue]*

**Advocacy 2024 March...**  
**POWA provided the Public  
Protector with comments and  
views on GBV in the context of  
Section 7 of the Criminal  
Procedure Act 51 of 1977**

# Structure and Operations



**Chair • Vice-Chair**  
**• Treasurer • Company Secretary**  
**Non-Executive Directors • Executive Director**  
  
*Board Committees...*  
*Finance and People & Culture*



# Challenges



‘Police crime statistics [Aug 2024]...Murders of women increased 7.9% to 966 during the first quarter, while attempted murders went up by 16% to 1 644, and assault GBH rose by 69% to 13 757 incidents. Similarly, murders of children climbed 7.2% to 314, attempted murder rose by 19.8% to 424 and assault GBH increased 11.5% to 1 596 incidents.

Source: 30 Aug 2024 **Mail & Guardian** AFRICA'S BETTER FUTURE

- Gender-based violence
  - exacerbated by economic and other conditions like social and cultural inequalities
- POWA specific...
  - Funding
    - Equipment
    - Facilities
    - Services – human capital
    - Transport
  - Work & Personal Life Balance



## Who we are... *in the words of a survivor...*



*‘This letter serves to appreciate the way my mind was put at rest after all kinds of abuse...*

*It causes much pain to want to move out of an abusive environment and not know where to start...*

*I got to hear that POWA assisted with shelter. I made contact and all necessary arrangements were made with no delays....*

*I have no words to describe the peace of mind I got after longing for it for years... I have found myself again and it helps to think properly on what to do going forward...*

*Spread the word about your services...POWA.’*

**Join us as we continue our journey of attaining equal legal and political rights for women and of addressing the fundamental rights of safety and security.**

*Thank you!*