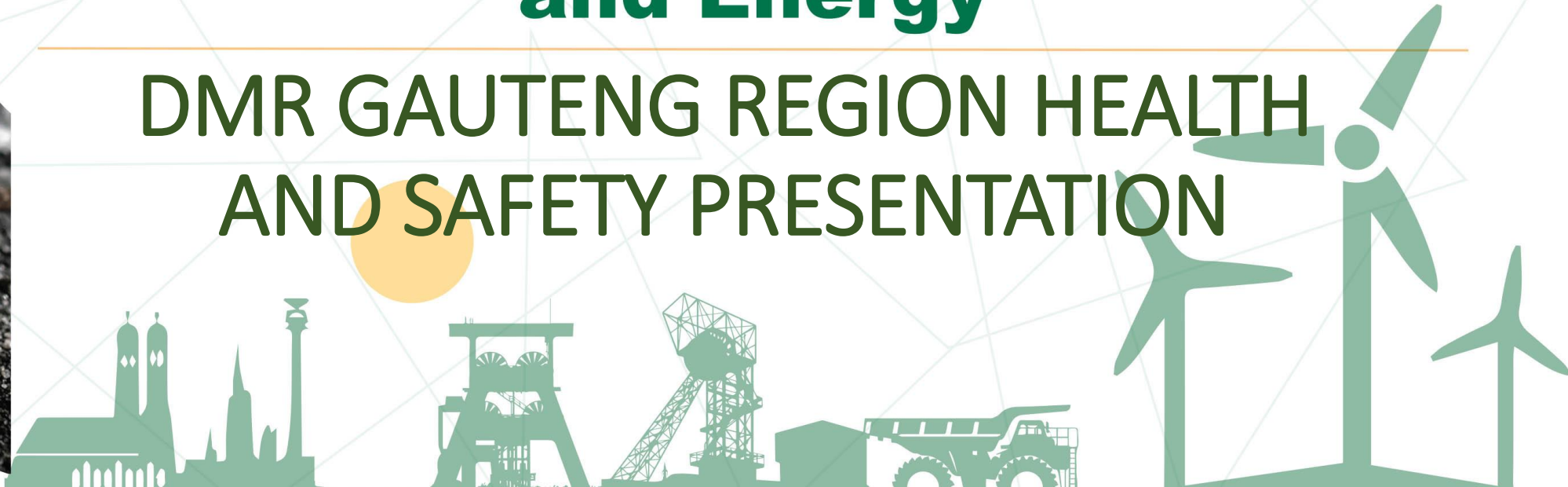


13th SEPTEMBER 2024

Department of Mineral Resources and Energy

DMR GAUTENG REGION HEALTH AND SAFETY PRESENTATION



mineral resources
& energy

Department:
Mineral Resources and Energy
REPUBLIC OF SOUTH AFRICA



PRESENTATION OUTLINE

Health and Safety Challenges.

(Occupational Health)



mineral resources
& energy

Department:
Mineral Resources and Energy
REPUBLIC OF SOUTH AFRICA



WHAT IS OCCUPATIONAL HEALTH

Occupational health is an area of work in public health to promote and maintain highest degree of physical, mental and social well-being of workers in all occupations.



mineral resources
& energy

Department:
Mineral Resources and Energy
REPUBLIC OF SOUTH AFRICA



HEALTH AND SAFETY CHALLENGES

- The part time Appointed medical practitioner (OMP) only goes to the mines once a yearly for annual medical surveillance and chronic management program is not in place.
- The OMP'S do not explain to the employer statutory reports as per the MHSa as they only come once a year at the mine.
- The OMP'S at mines do not visit mines for follow ups, health risk assessments which will assist with medical surveillance which is linked to hygiene measurements.



mineral resources
& energy

Department:
Mineral Resources and Energy
REPUBLIC OF SOUTH AFRICA



HEALTH AND SAFETY CHALLENGES

- The OMP'S will refer employees to the local clinic and still not follow up on those referral throughout the year.
- Employees who have been found to have suspected occupational diseases proper health management is not done by OMP.
- The Section 11.5 Investigations into suspected occupational diseases due to over exposure are not done.
- The employees who are found to have occupational diseases are not submitted to relevant authorities.



mineral resources
& energy

Department:
Mineral Resources and Energy
REPUBLIC OF SOUTH AFRICA



HEALTH AND SAFETY CHALLENGES

- The small mines are unable to keep all stats of employees who have developed suspected occupational diseases after employment due to the latency period of the diseases.
- OMP'S are not considering occupational hygiene baseline risk assessment when drafting mandatory health COP'S.



mineral resources
& energy

Department:
Mineral Resources and Energy
REPUBLIC OF SOUTH AFRICA



CONCLUSION

- The employer should take cognizant that occupational health and safety at the working place is to be prioritized.
- Strengthening tripartite stakeholder relationships on matters of health and safety.
- The employee's representative must be involved in all health and the investigations.



THANK YOU!



mineral resources
& energy

Department:
Mineral Resources and Energy
REPUBLIC OF SOUTH AFRICA

